

Facts & Figures

The Port of Amsterdam believes that Amsterdam's business climate is unique in Europe. Statistics from reliable sources support our conviction. These facts & figures present an unbiased picture of the most relevant location factors.

Content

1. Amsterdam key statistics
2. Real estate
3. Connections
4. Business climate
5. Labor
6. Companies located in the Amsterdam area



1. Amsterdam key statistics

General

- Port of Amsterdam: 4th in Europe
- Amsterdam Airport Schiphol: 4th in Europe
- Number of European headquarters: 179
- International congress destination: number 10 world ranking international non-corporate congress cities 2006 (Union of International Associations)

Population

- The Netherlands: 16,34 mln (CBS)
- The population density in Europe is the highest in the Netherlands, 474 inhabitants per km². *Source: Eurostat yearbook 2005*
- Amsterdam: 742,951
- Greater Amsterdam Area(GAA):1,528,827
- Labor force GAA:799,600
- Labor force Amsterdam: 386,700
- Until 2010 the Amsterdam economy grows 2,9% annually (Ecorys 2006)

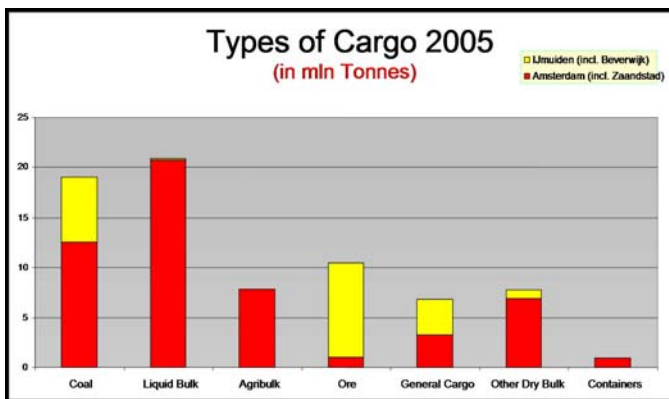
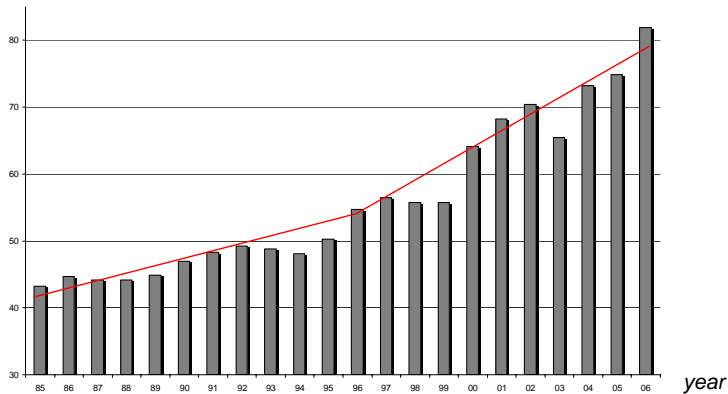


Facts & Figures

Port of Amsterdam

- Throughput: 85 million tons
- Employment: 37,300
- Added value: €4,4 milliard

tons



2. Real estate

- Industrial area and marine terminals
- Existing: 1056 ha/2608 acres
- Available: 508 ha/1255 acres
- Waterbasins/infrastructure: 988 ha/2440 acres



Facts & Figures

3. Connections

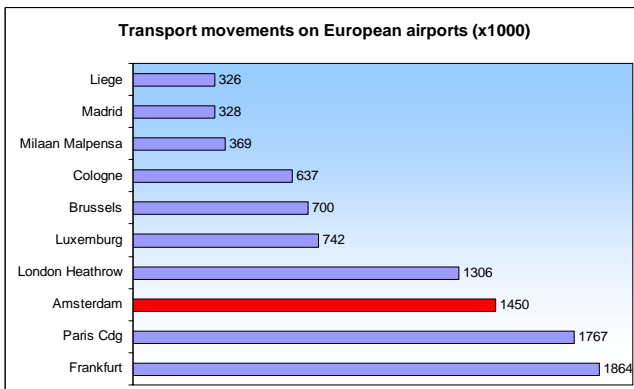
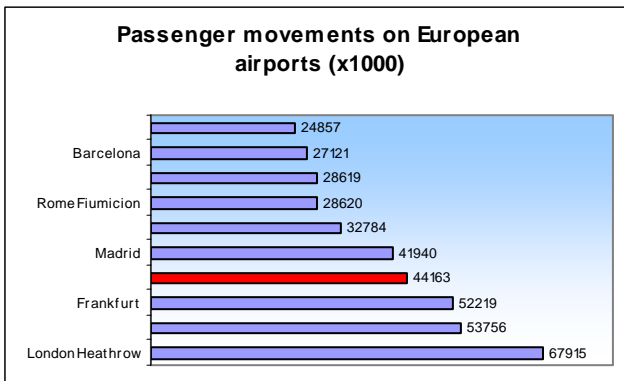
Port of Amsterdam

Amsterdam is one of the most important junctions in Europe for combined water, road, railway and air transport. With annual goods transhipments over 80 millions tons, the Port of Amsterdam plays a crucial role for European business. The proximity of the sea, the many connections with the European hinterland and the short distance to Amsterdam Airport Schiphol are among the favourable conditions for optimal logistics and distribution.

Amsterdam Airport

Amsterdam Airport Schiphol handles more than 46 million passengers and 1,5 million tonnes of cargo per year and is located only 15 minutes from the city centre. Schiphol has been favourite in the Business Traveller magazine's annual survey for many years and has received plenty of other international accolades

Amsterdam Schiphol Airport is ranked as one of the top airports in Europe for passenger and cargo transport.



Source: Schiphol Group



Facts & Figures



Roads & inland waterways

The Netherlands has a large market share in cross-border transport in Europe. An interconnected system of European motorways spans the major (Western) European countries, from Britain to Austria and from Scandinavia to Italy. The heaviest concentration can be found in the triangle comprising the Netherlands, Belgium and the Rhine-Ruhr area of Germany. Apart from motorways and roads, the Netherlands has a comprehensive system of inland waterways which is an important competitive factor, increasingly more so as inland navigation is a comparatively clean and inexpensive form of longer-distance transport.

Rail

The Dutch railway system is fully integrated in the European rail network. Hence rail transportation is possible throughout Europe, the Middle East and even throughout the Commonwealth of Independent States (CIS). A large Dutch rail project is the Betuweroute, which will boost rail transport from the Netherlands to Germany and other European countries. Inland container terminals are linked to the railway.

4. Business climate

Outcome European Cities Monitor 2005

- The best cities to locate business today: Amsterdam 6th rank
- Familiarity with cities as a business location: Amsterdam 61%
- Best cities in terms of easy access to markets: Amsterdam 6th rank
- Best cities in terms of qualified staff: Amsterdam 9th rank
- Best cities in terms of external transport links: Amsterdam 4th rank
- Best cities in terms of quality of telecommunications: Amsterdam 9th rank
- Best cities in terms of the climate governments create: Amsterdam 10th rank
- Best cities in terms of languages spoken: Amsterdam 3rd rank

Source: Cushman&Wakefield, Healey & Baker



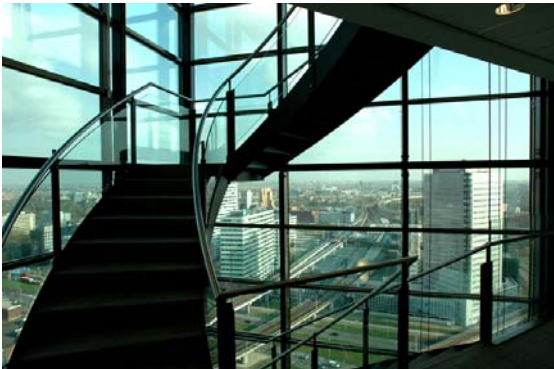
Facts & Figures

Corporate income tax (%)

- USA: 35
- UK: 30
- **Netherlands: 29,6**
- Luxembourg: 22
- Ireland: 12,5
- Germany: 25
- France: 33,3
- Denmark: 28
- Belgium: 33
- Austria: 25

Corporate tax is levied on resident and non-resident companies. Resident companies are those incorporated under Dutch civil law, including subsidiaries of foreign companies and European companies established in the Netherlands, even if their management and statutory seat are located abroad. In addition, companies are resident if incorporated under foreign civil law, but effectively managed and controlled in the Netherlands. Resident companies are subject to tax on their worldwide income. Non-resident companies, primarily branch offices of foreign companies doing business in the Netherlands, are taxable only on specific income items, such as real estate and business profits in the Netherlands.

Source: Ernst & Young World Wide Corporate Tax Guide 2005



Top 10 costs of renting office space in the major business cities worldwide

In USD per m2 annually

- 1) London West End \$1997
- 2) Tokyo center \$1399
- 3) London City \$1372
- 4) Tokyo out of center \$1269
- 5) Hongkong \$1094
- 6) Moscow \$1020
- 7) Bombay \$1001
- 8) Paris \$995
- 9) Dubai \$943
- 10) Dublin \$941

44) Amsterdam \$443

Source: CB Richard Ellis



Port of Amsterdam

Facts & Figures

5. Labor/education

City of Amsterdam 2005

- Total population: 742.951
- Population 20-64 years: 539.200
- Total professional population: 386.700
- Employed: 346.500
- Unemployed: 40.200
- Registered unemployment: 29.900

- Number of college students 2005
- Universities of Amsterdam: 40.895
- Professional Education Amsterdam: 33.612

Source: *Amsterdam in figures 2005*



Port of Amsterdam

Facts & Figures

6. Companies located in the Amsterdam area

IT

@home
Aspect Telecommunications
AT&T/ Unisource
BMC Software
Chello
Cisco Systems
Computer Task Group
Debitel
Hewlett Packard
IBM
Imation
Intergraph
InterXion
Juniper Networks
Metromedia Fiber Network
Microsoft Benelux
NEC Logistics
Nortel Networks
Seagate Technology
Tie Holding
Unisys
UPC Europe
Veritas software

Aviation/aerospace

AAR
Aero Systems Engineering
Allied Aviation
Atlas Air
Aviall Services
Bell Helicopter
BF Goodrich
Boeing
CAE
Canso
Chapman Freeborn
Debis Air Finance
Dixie Aerospace
EADS
Epcor
FLC Control Systems
GE Power Systems
Hamilton Sundstrand
Hawker Pacific
Honeywell
Hughes Avicom
IATA
Itochu
Jamco Europe
KLM Engineering & Maintenance
KLM Aerospace Logistics
Nordham Group
Ogden Europe
PPG
Rockwell-Collins
Schreiner
Stork
Sumisho Aircraft Asset
Management
Tombo Aviation

Automotive

Covisint
Eaton
Hirose
Fiat Auto Nederland
Mitsubishi Motors Europe
Nissan
Renault
Yamaha Motor Distribution
Koopman



Port of Amsterdam

Facts & Figures

Medtech

Abbott
Bausch & Lomb
Biogen
Coty Holdings
Idexx Europe
Merck Sharp & Dohme
Opticon Sensors Europe
Parke Davis
Scanlan Group

Electronics

Canon Europe
Dufri International
Fujitsu/Siemens
Hirose Electric
LG Electronics
Mitsubishi Electric Europe
Ricoh Europe

Financial

ABN-Amro
Chubb Insurance Company
Falcon Leven
ING
Rabobank

Logistics

Danzas/AEI
Airborne Express
Emery World Wide
Fritz Companies Ned.
K-Line Air Service
Kühne & Nagel
MSAS Global Logistics
Nippon Express

Professional services

Boekel de Nerée
Bureau Veritas
Ernst & Young
Ferring
Lowland International
Nauta Dutilh
Stibbe Group
Vedior Group

Others

AAR International
British American Tobacco
DHL International
Esprit Telecom
Heineken Export
Hugo Boss
Kyocera Mita Europe
Sheraton
Radisson Sas
Reliant Energy
Rothmans Group
Woodward Governor

Facts & Figures is a publication of the Commercial Division of the Port of Amsterdam

De Ruyterkade 7
1013 AA Amsterdam
The Netherlands

P.O. Box 19406
1000 GK Amsterdam
The Netherlands
Tel 0031 20 5234 560
Fax 0031 20 6209821
www.portofamsterdam.nl
marketing@portofamsterdam.nl

Internet sources

www.iamsterdam.com
www.aaarea.nl
www.nfia.nl
www.portofamsterdam.nl
www.schipholgroup.nl
www.os.amsterdam.nl
www.amsterdam.nl



Port of Amsterdam